

Essential Contact Information

For curbside
pick-up inquiries



**GEIER WASTE
SERVICES**

250-638-1100

PO Box 38, Terrace, B.C. V8G 4A2

Phone: 250-638-1100

Email: geierwasteservices@citywest.ca

For recycling facility
hours and inquiries



**DO-YOUR-PART
RECYCLING**

3467 Hwy 16E, Terrace, B.C. V8G 3P1

Phone: 250-615-7692

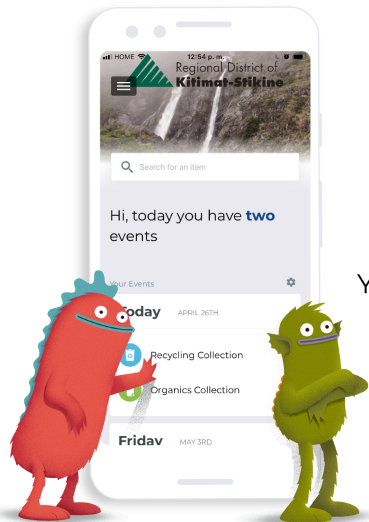
Website: www.doyourpart.ca



Recycling made easy.

Download the **FREE** app on
your app store today!

- You get:
- A personalized collection schedule
 - Custom collection reminders
 - **What Goes Where?** search tool
 - **What type of recycler are you?** quiz
 - Report A Problem feature



Greater Terrace Area

Curbside Organics, Recycling
& Garbage Collection Schedule

INFORMATION – GUIDE – 2022



**NEVER MISS ANOTHER
COLLECTION DAY!**

Download the **FREE** Recycle Coach™ app



Your collection
schedule and notices
at your fingertips.

Collection Schedule													
September 2022													
S	M	T	W	T	F	S							
28	29	30	31	1	2	3							
4	5	6	7	8	9	10							
11	12	13	14	15	16	17							
18	19	20	21	22	23	24							
25	26	27	28	29	30	1							
2	3	4	5	6	7	8							

Revised: December 2020



How To: Weekly Organics Collection

TO THE CURB
8:00
am

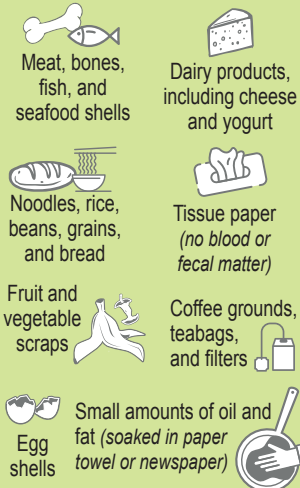
Container Size and Limit

- A maximum of six items may be placed at the curb each week, consisting of two containers with lids (which may contain kitchen waste and/or yard waste) and up to four kraft paper bags or bundles of yard waste only.
- Each rigid container must be no more than 99 litres and 23 kg (50 lbs) when set out for collection.
- Each kraft paper bag must be no more than 110 litres and 23 kg (50 lbs) when set out for collection.
- Each bundle of yard waste must be no larger in any dimension than the height of the 110 litre kraft bag, and must be no heavier than 23 kg (50 lb).

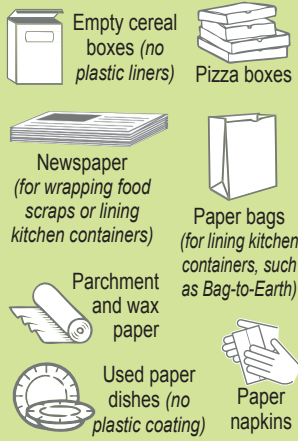
ACCEPTED

These materials are accepted in your curbside **organics container**:

Food Scraps

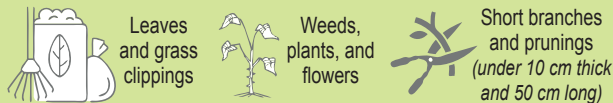


Food-soiled paper products



These materials are accepted in your curbside **organics container or kraft bag**:

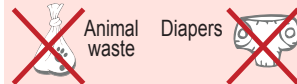
Yard trimmings



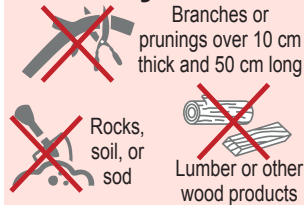
NOT ACCEPTED

These materials are **NOT** accepted in your curbside **organics container or kraft bag** and should be recycled or safely disposed of:

Fecal matter



Large or heavy items



Plastics



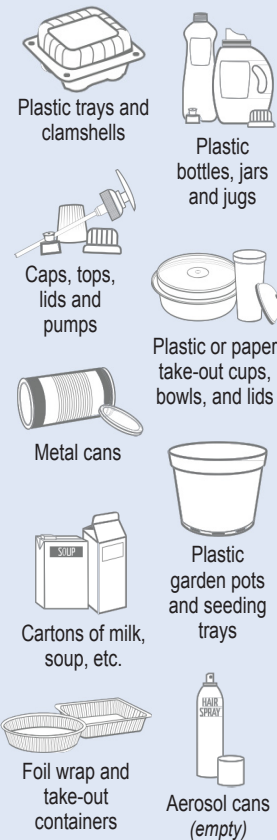
How To: Bi-weekly Recycling Collection



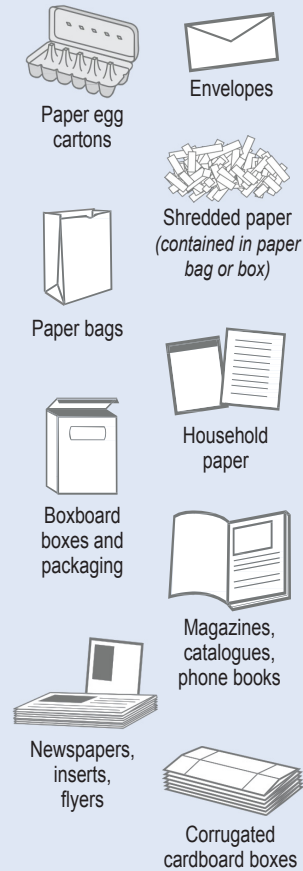
TO THE CURB
8:00
am

ACCEPTED

Mixed Containers



Mixed Paper



NOT ACCEPTED

Do **NOT** place in curbside recycling



GLASS, PLASTIC BAGS / OVERWRAP AND STYROFOAM ARE NOT ACCEPTED CURBSIDE. PLEASE RETURN TO DEPOT. DO-YOUR-PART RECYCLING IS LOCATED AT 3467 HWY 16 E.

Curbside Collection Guidelines

- Materials should be curbside by 8:00 am on the designated collection day, and no earlier than 10:00 pm on the day before collection day.
- Weight limit: 23 kg./50 lbs. for all bins and bags.
- Place all containers within 2 m of the roadway.
- Remove empty containers no later than 10:00 pm on collection day.
- Do not tie down lids of containers.

Weekly Organics Collection Bagging Requirements

Organics containing kitchen or food waste must be placed in rigid, lidded containers.

The Regional District recommends, but does not require, the use of compostable bags to help keep containers clean, reduce odour, and reduce animal attraction. Compostable bags may be small (e.g. the size used to collect food scraps in the kitchen) or large (e.g. the size used to line the entire container). Compostable bags must display one of these logos:



COMPOSTABLE
Biodegradable Products Institute | US COMPOSTING COUNCIL

“Biodegradable” plastic bags are not acceptable, as that type of plastic does not truly compost.

Bi-weekly Garbage Collection

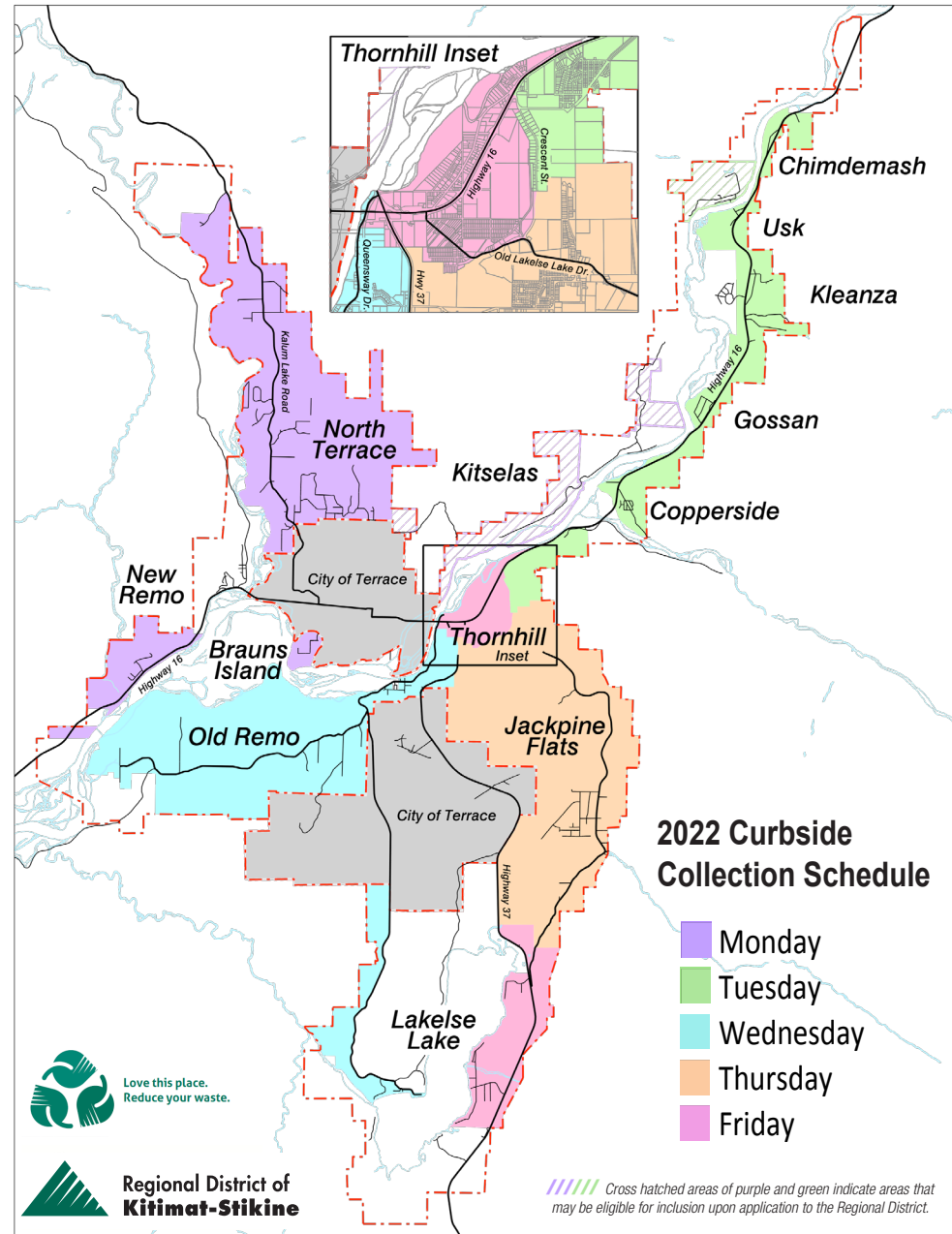
- Garbage must be bagged and placed in a rigid, waterproof can with a lid.
- For extra garbage, bag tags can be purchased at the Regional District office for \$2 each in a group of 10. A maximum of 4 bag tags can be used per collection.
- Not Accepted in Garbage Collection: Recyclables, bulky items such as furniture, appliances, electronic products, liquids, and organic materials.

Bi-weekly Recycling Collection

- Unlimited recycling is accepted each collection.
- Flatten cardboard and place beside your recycling can in bundles not exceeding 1 cubic metre (36" x 36" x 36").
- Rinse containers to remove food residue.



Service Area Map



2022 Collection Schedule

TO THE CURB
8:00
am

Legend Recycle Garbage Organics No Collection

No Collection on the Following Days: New Year's Day, Family Day, Good Friday, Victoria Day, Canada Day, BC Day, Labour Day, National Day for Truth and Reconciliation, Thanksgiving Day, Remembrance Day, Christmas Day, Boxing Day. **Collection occurs the following business day.**

MARCH 2022						
S	M	T	W	T	F	S
		1	2	3	4	5
6	7	8	9	10	11	12
13	14	15	16	17	18	19
20	21	22	23	24	25	26
27	28	29	30	31		

APRIL 2022						
S	M	T	W	T	F	S
					1	2
3	4	5	6	7	8	9
10	11	12	13	14	15	16
17	18	19	20	21	22	23
24	25	26	27	28	29	30

MAY 2022						
S	M	T	W	T	F	S
1	2	3	4	5	6	7
8	9	10	11	12	13	14
15	16	17	18	19	20	21
22	23	24	25	26	27	28
29	30	31				

JANUARY 2022						
S	M	T	W	T	F	S
						1
2	3	4	5	6	7	8
9	10	11	12	13	14	15
16	17	18	19	20	21	22
23	24	25	26	27	28	29
30	31					

FEBRUARY 2022						
S	M	T	W	T	F	S
		1	2	3	4	5
6	7	8	9	10	11	12
13	14	15	16	17	18	19
20	21	22	23	24	25	26
27	28					

JUNE 2022						
S	M	T	W	T	F	S
			1	2	3	4
5	6	7	8	9	10	11
12	13	14	15	16	17	18
19	20	21	22	23	24	25
26	27	28	29	30		

JULY 2022						
S	M	T	W	T	F	S
					1	2
3	4	5	6	7	8	9
10	11	12	13	14	15	16
17	18	19	20	21	22	23
24	25	26	27	28	29	30
31						

AUGUST 2022						
S	M	T	W	T	F	S
	1	2	3	4	5	6
7	8	9	10	11	12	13
14	15	16	17	18	19	20
21	22	23	24	25	26	27
28	29	30	31			

SEPTEMBER 2022						
S	M	T	W	T	F	S
				1	2	3
4	5	6	7	8	9	10
11	12	13	14	15	16	17
18	19	20	21	22	23	24
25	26	27	28	29	30	

OCTOBER 2022						
S	M	T	W	T	F	S
						1
2	3	4	5	6	7	8
9	10	11	12	13	14	15
16	17	18	19	20	21	22
23	24	25	26	27	28	29
30	31					

NOVEMBER 2022						
S	M	T	W	T	F	S
		1	2	3	4	5
6	7	8	9	10	11	12
13	14	15	16	17	18	19
20	21	22	23	24	25	26
27	28	29	30			

DECEMBER 2022						
S	M	T	W	T	F	S
				1	2	3
4	5	6	7	8	9	10
11	12	13	14	15	16	17
18	19	20	21	22	23	24
25	26	27	28	29	30	31

How To: Bi-weekly Garbage Collection One 121 L lidded can of bagged garbage not exceeding 23 kg / 50 lbs is accepted each collection.

Missed Collection?

Contact Geier Waste Services about missed collections and the collection service. For billing and additional program information, contact the Regional District.



If you are physically unable to bring bins to the curb, please contact us to request "Container Management".

What to do with Large Items?

Bulky items such as large furniture are not accepted in curbside collection. Please call or visit www.rdks.bc.ca for items that are accepted at the Thornhill Transfer Station.

Oops Sticker!

"Oops Stickers" help you use the collection service correctly. Most "Oops Stickers" messages are triggered by safety. If the can is too heavy, contains visible dangerous materials, or is too far/close to the roadway, it may be unsafe for the collection hauler or other vehicles. The stickers will let you know.

Have Extra Garbage?

Extra bag tags are available for \$2 each in a group of 10. A maximum of 4 bag tags may be used per collection. For excess medical wastes, contact us to apply for a **Medical Waste Exemption**.

